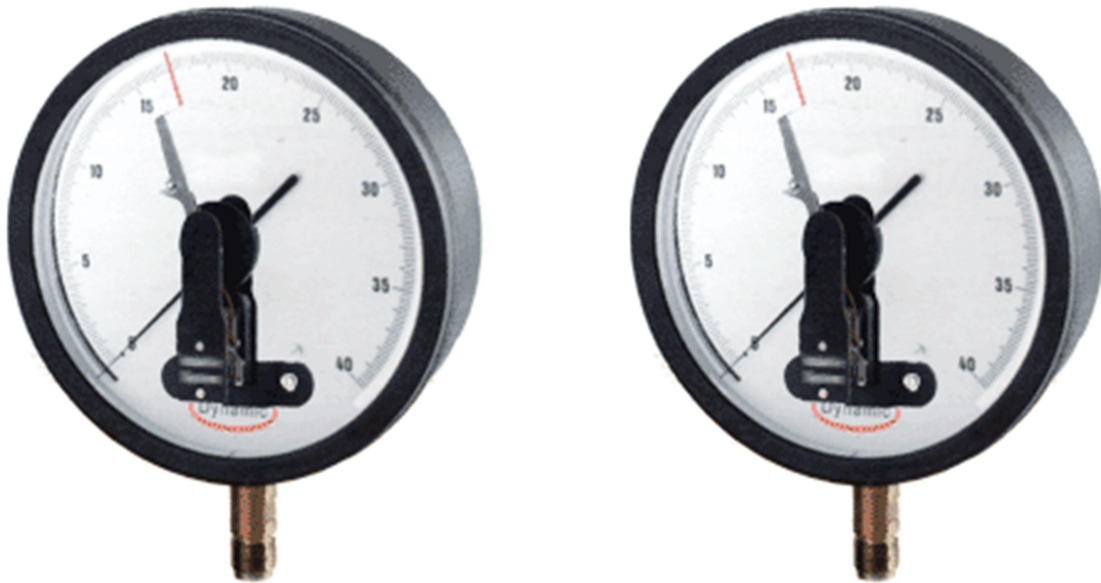


Contact Gauges

Series 700



Applications

Contact Gauges are ideal in the applications which demands measurement and control of pressure by switching electrical contacts ON and OFF. This eliminates the need of separate switches for pumps and motors which gives audio or visual alarms. The small adjustable magnet mounted in the contact assembly, attracts the contact arm just before the set pressure value which prevent the common problem of arcing and burning of contact pins.

Sizes

- 100, 150mm

Accuracy

- $\pm 2.0\%$ FSD

Standard Features

- Pressure Connection
- Bottom or Back

Bourdon Tube (Wetted Part)

- Copper Alloy / SS 316

Movement

- Copper Alloy / SS 304

Dial

- White Alluminum with Black Markings

Bezel Ring

- Screwed/Pressfit

Over-Range Protection

- 130% of FSD

Mounting

- Bottom or Back

Threaded Entry

- 1/4", 1/2" BSP/NPT
- Typical Applications
- For Heavy Duty installations.

Pressure Element

- Material: Copper Alloy/ SS 316
- < 100kg/cm²: C Type
- >100 kg/cm²: Coil Type

Pointer

- Aluminium/Spring Steel

Window

- Clear Acrylic

Case

- SS Case OR Die Cast Alluminium Black Finish

Contact Details

- Single Or Double Electrical Contacts

Contact Rating

- Voltage: 250V max.
- Rating: 30W (DC), 50 VA (AC),
- Current Rating: 0.75 Amp max.

Set Point Adjustment

- By means of removable key

Optional

- 3 hole Surface Mounting Flange
- With Clamp or Panel (Back Entry only)
- Other Pressure connection Other Pressure connections